



# Mobile Revalyst Installation Guide

Revalyst on the Pocket PC

**Future Path Development Group Inc.**

**Table of Contents**

**System Requirements ..... 1**  
**Installing ActiveSync ..... 2**  
**Mobile Device – Revalyst Software Requirements ..... 16**

Mobile Revalyst requires that your mobile device be able to communicate with your desktop computer. You do not have to use Microsoft ActiveSync, if you already have communication software installed.

Microsoft ActiveSync 3.7.1 is the latest synchronization software for Windows Mobile-based Pocket PCs and Smartphones. If you had not already installed ActiveSync 3.5, ActiveSync 3.7.1 will also bring you up to date with compatibility to Microsoft Office XP and Windows XP.

### **System Requirements**

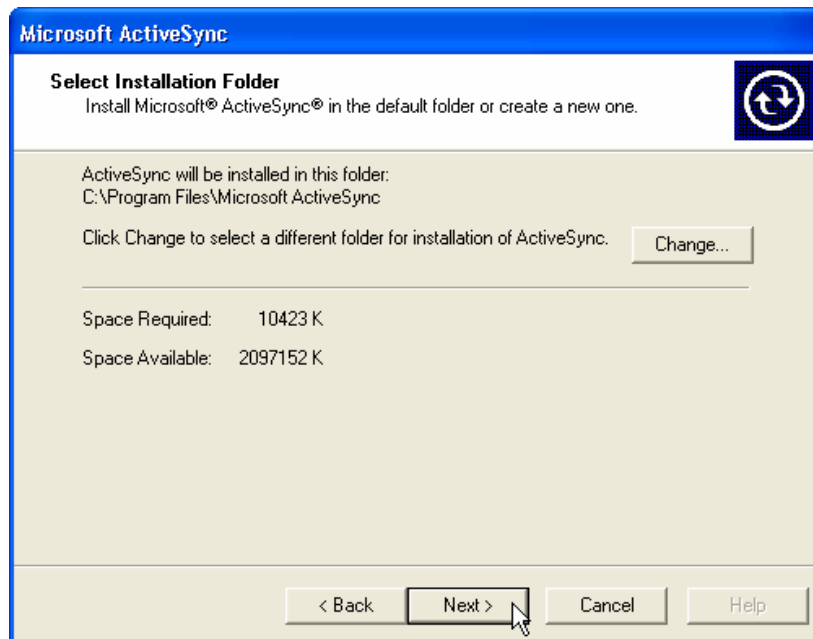
- **Supported Operating Systems:** Windows 2000, Windows 98 Second Edition, Windows ME, Windows XP
- Microsoft Outlook 98 or later required for synchronization to the desktop or portable computer of e-mail, calendar, contacts, tasks, and notes. (Outlook 2002 recommended)
- Microsoft Internet Explorer 4.01 SP1 or later
- Hard-disk drive with 12 to 65 MB of available hard-disk space (actual requirements will vary based on selection of features and user's current system configuration)
- Available 9- or 25-pin communications port (adaptor required for 25-pin communications port), infrared port, or USB port (available for Windows 98, Windows Me, Windows 2000, and Windows XP only)
- One CD-ROM drive
- VGA graphics card or compatible video graphics adapter at 256 color or later
- Keyboard
- Microsoft Mouse or compatible input device

## Installing ActiveSync

Launch ActiveSync and follow the instructions, as shown below.

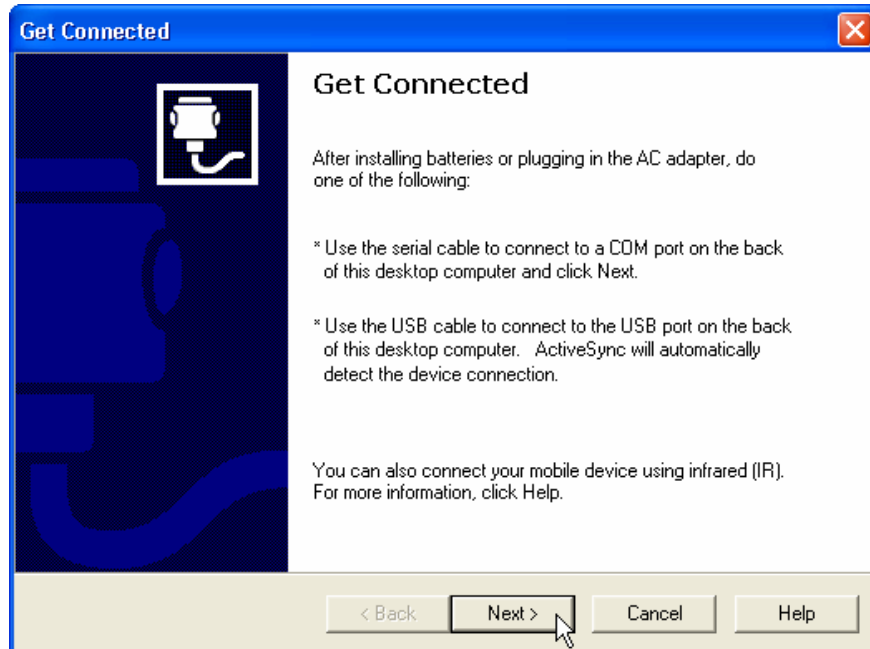


Press Next to use the default directory settings.



A message box will appear and provides file copying status information.

Before continuing on, ensure that the mobile device is connected to your computer. ActiveSync will automatically detect the device connection.



The following screen appears as the detection process is carried out.

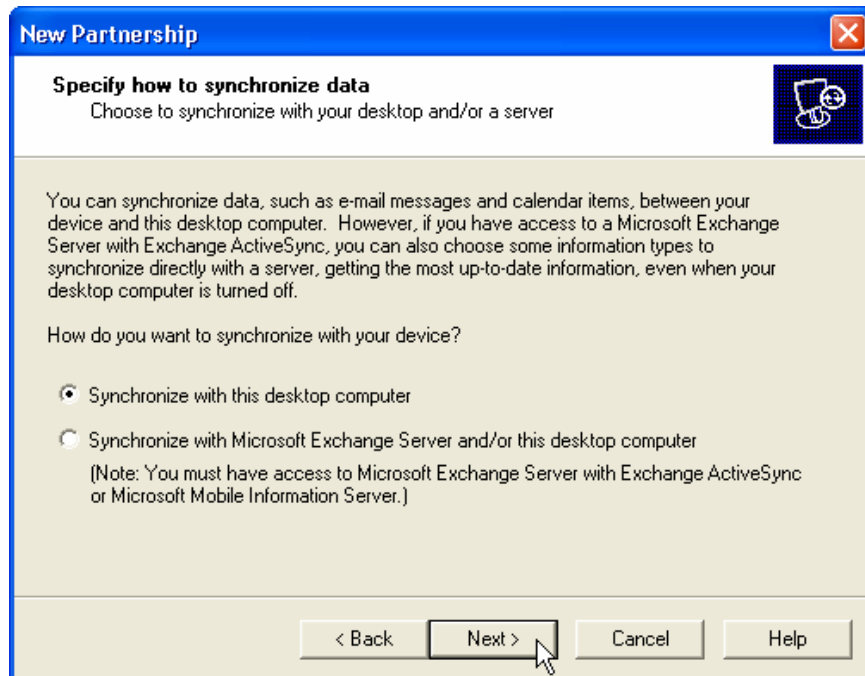


If your mobile device was detected, the next screen will appear. If not, it means the device was not detected. Make sure the cable is attached correctly and the mobile device is turned ON. **Please ensure that your mobile device is connected and working properly before continuing.**

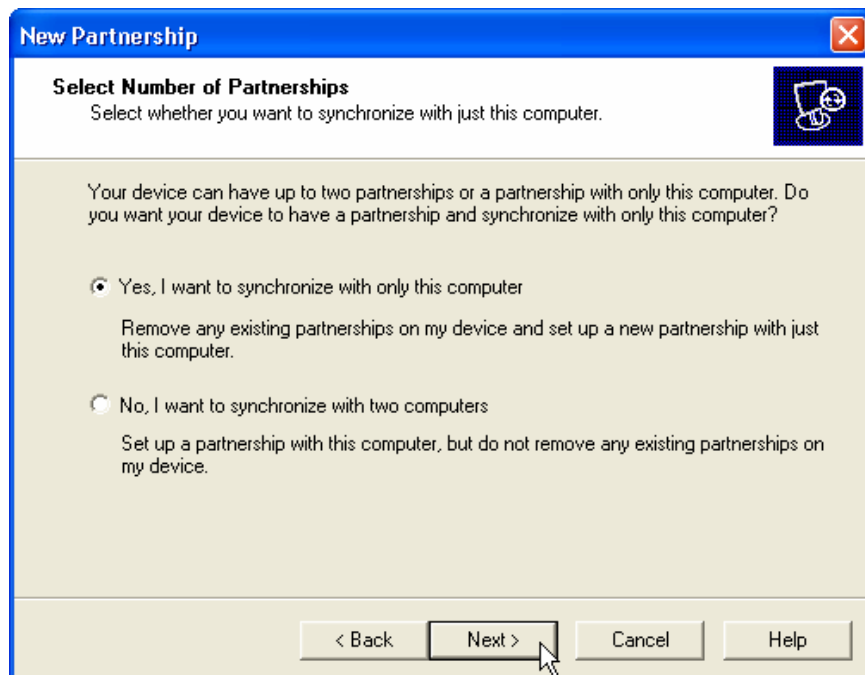
After the device has been detected, a partnership must be setup. A Standard partnership provides consistency between your computer and mobile device through a synchronization process, whereas a Guest partnership only allows the transfer of data between your computer and mobile device.



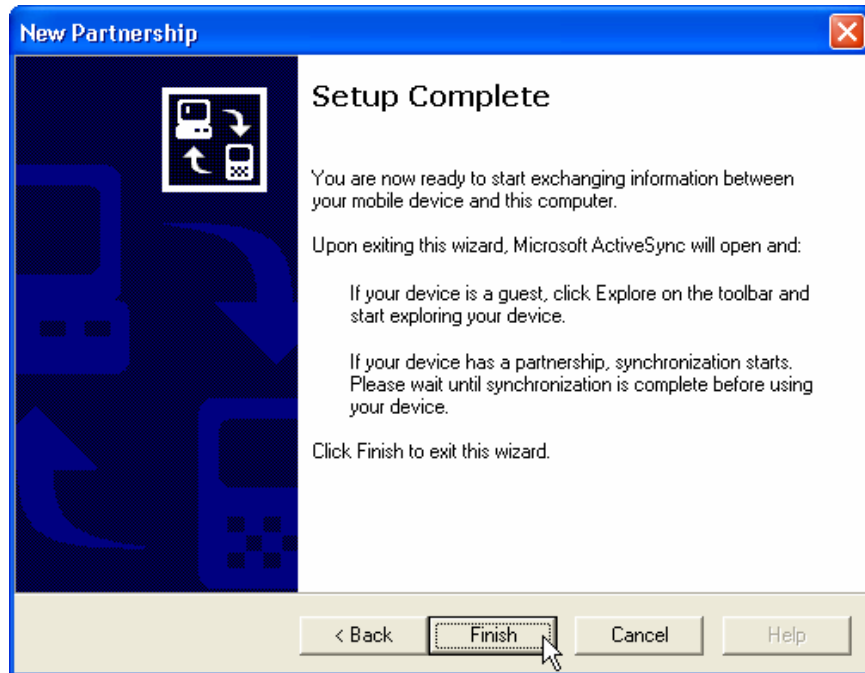
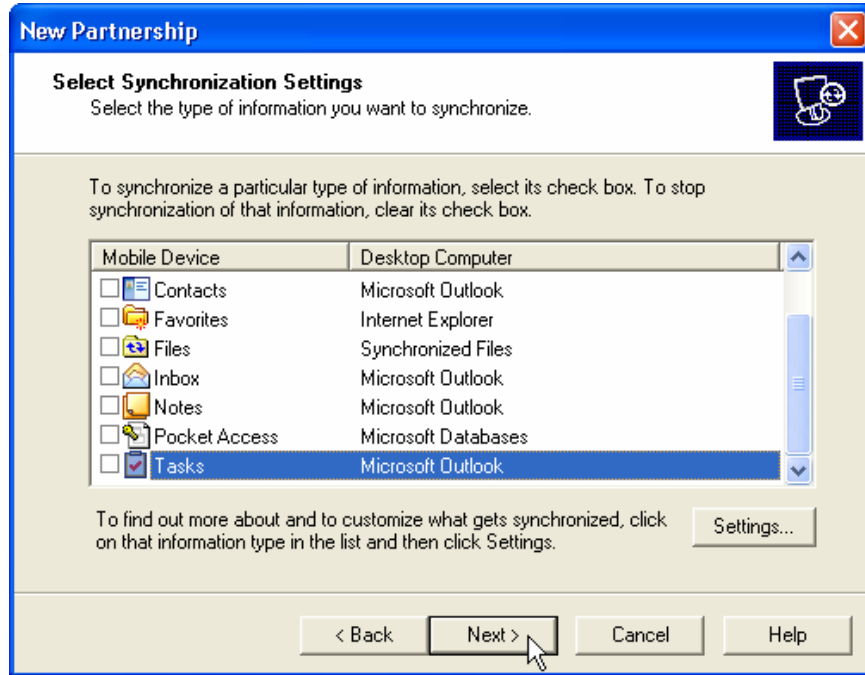
If your mobile device is intended for use with Mobile Revalyst only, select the first option (default). If you plan to use Microsoft Exchange (outside the discussion of this document), selection the second option.



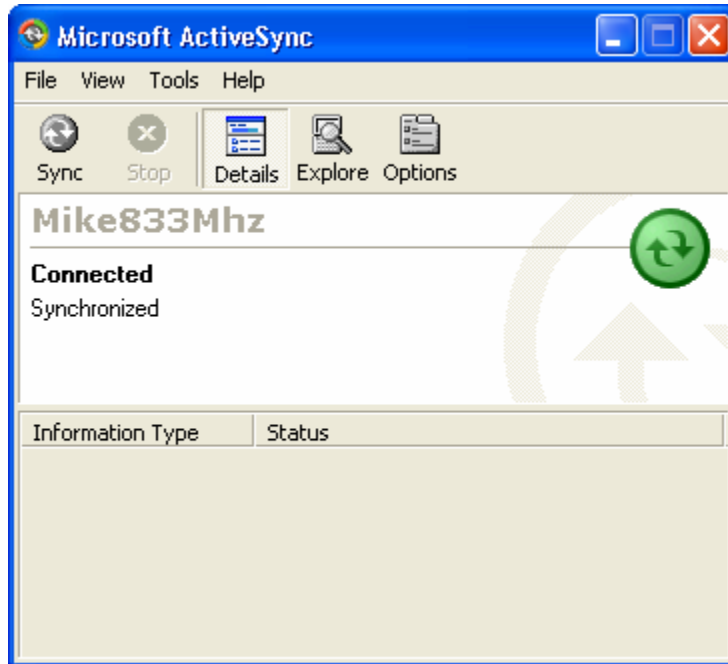
If your mobile device already synchronizes with another computer, select option 2. You may synchronize with up to 2 computers. Option one will create a partnership with the current computer and remove any existing partnerships. Press Next.



If this installation is for Mobile Revalyst only, you should deselect all the items that have been checked by default, otherwise, select all those that apply. Press Next.



Press Finish. You should see the following screen appear, with your computer name. If the installation was successful, you will see the “Connected” message, as shown below.



**You now have connectivity between your mobile device and your computer.**

## Desktop – Revalyst Software Requirements

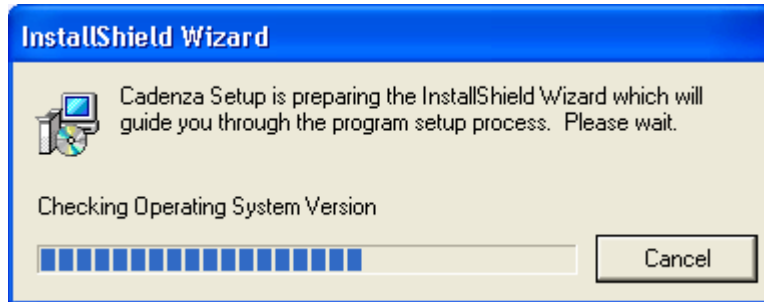
Software must be installed on your desktop computer, so that Mobile Revalyst will run.



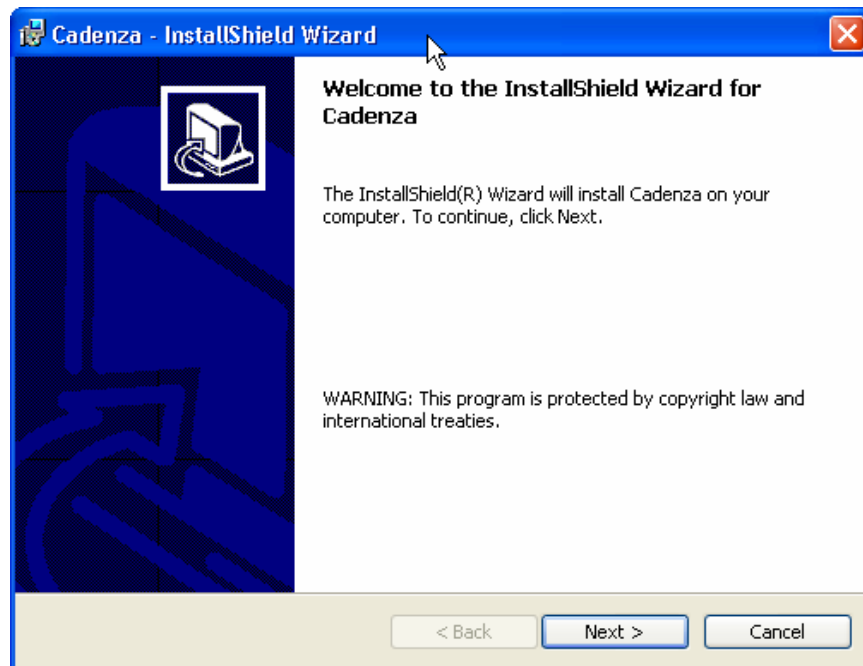
21,777 KB Windows Installer Pa... 6/9/2003 10:11 AM

The appropriate software can be purchased from Future Path Development Group.

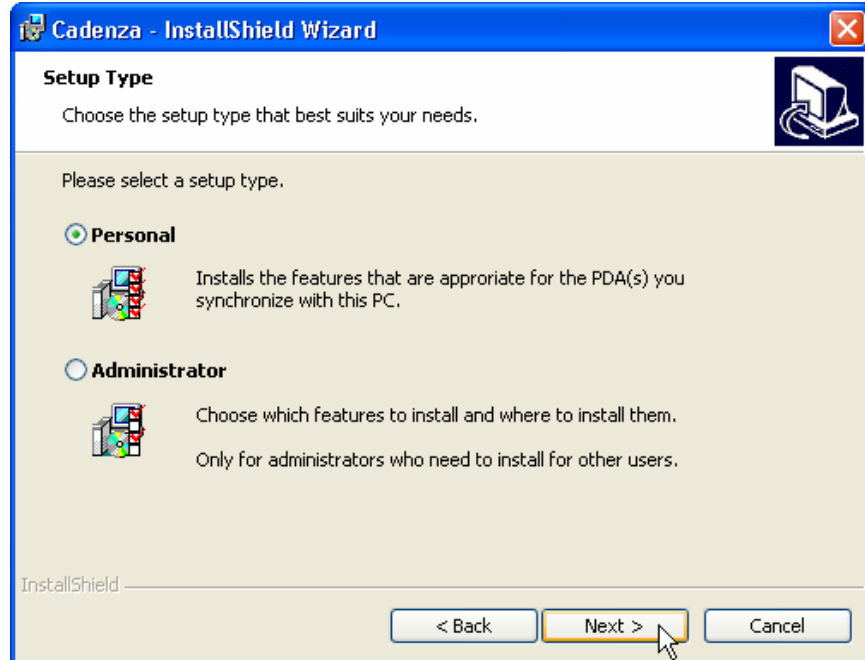
Double-click the file to start the installation process. The following message will appear.



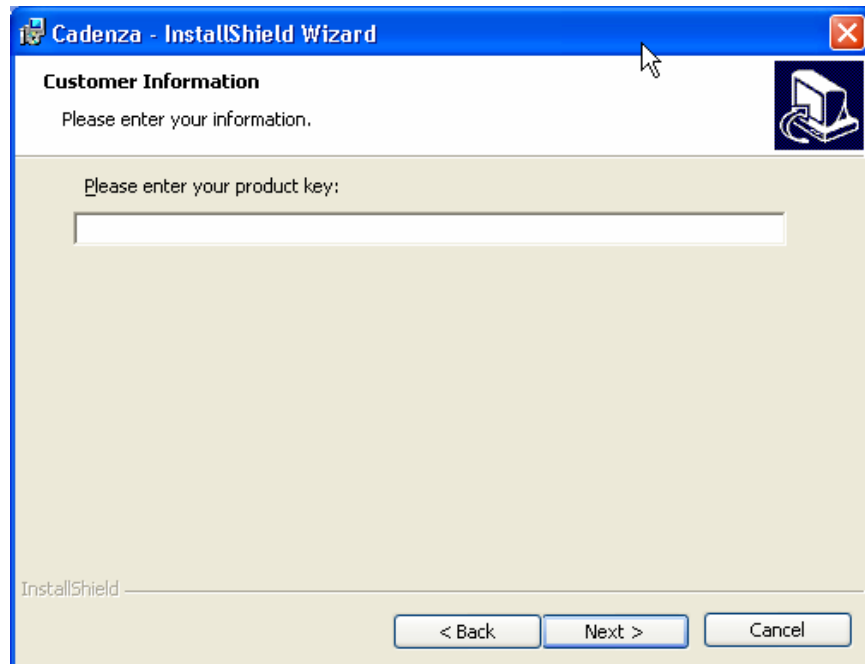
Press Next.



Decide which options most suits your needs. For a single installation, choose Personal.

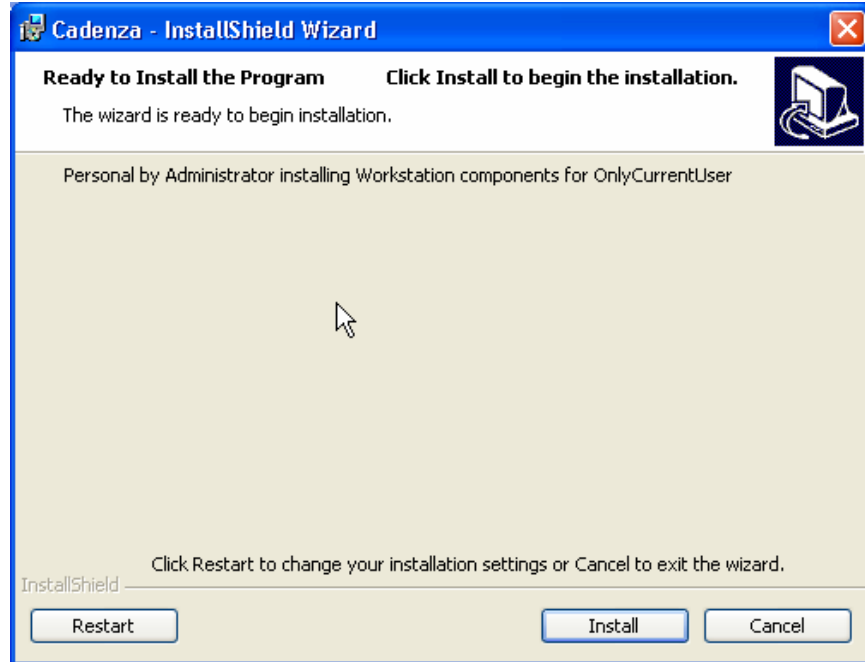


Enter the product key provided by Future Path.

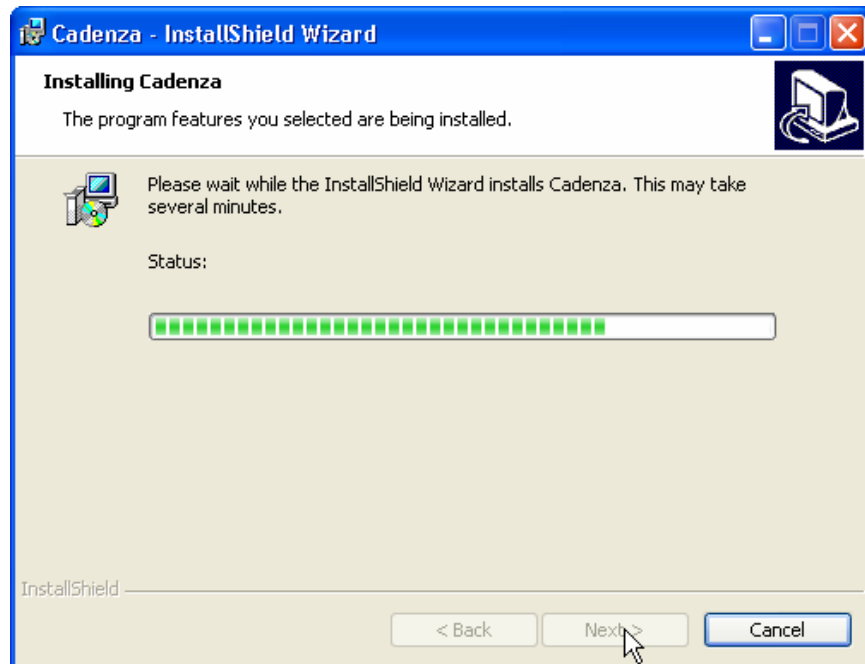


Press Next.

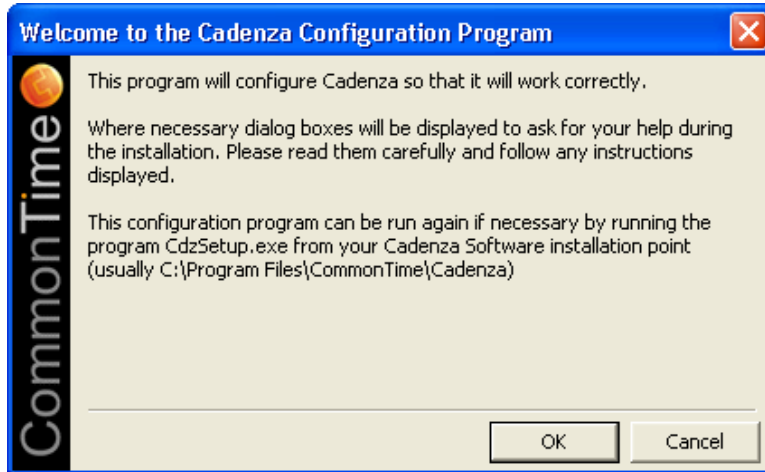
If the key was validated you will see the following screen.



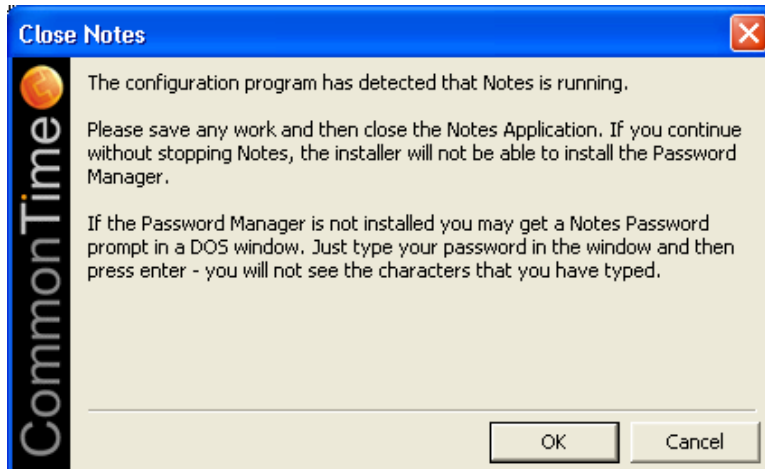
Press Install.



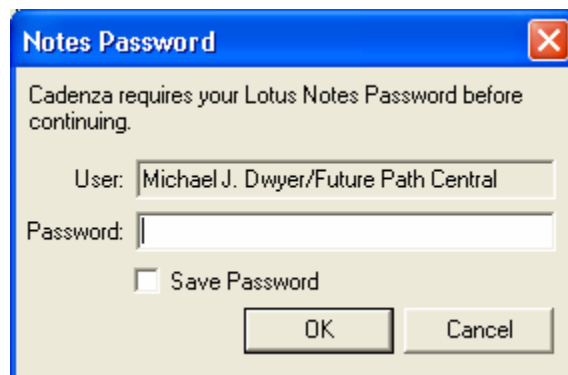
Once the software has been successful installed, it must be configured to work with your Lotus Notes user id. Security is always maintained.



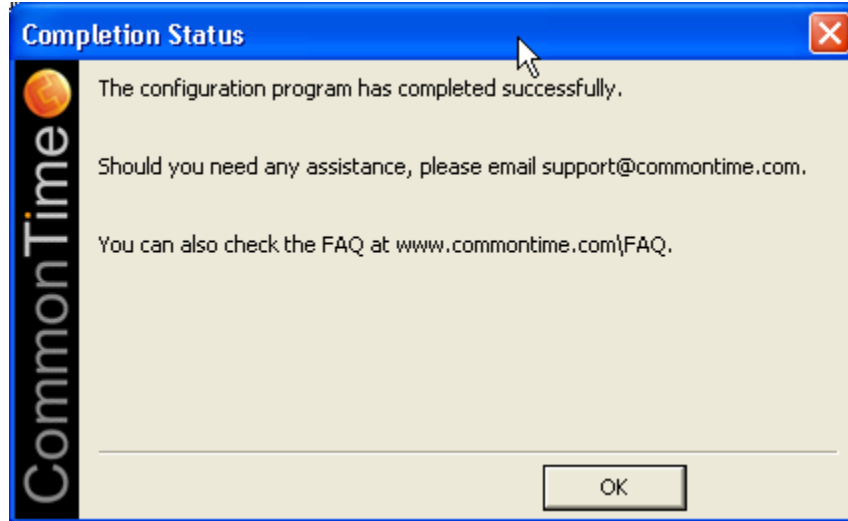
If Lotus Notes is running during this process, you will be notified to close it down, as shown below.



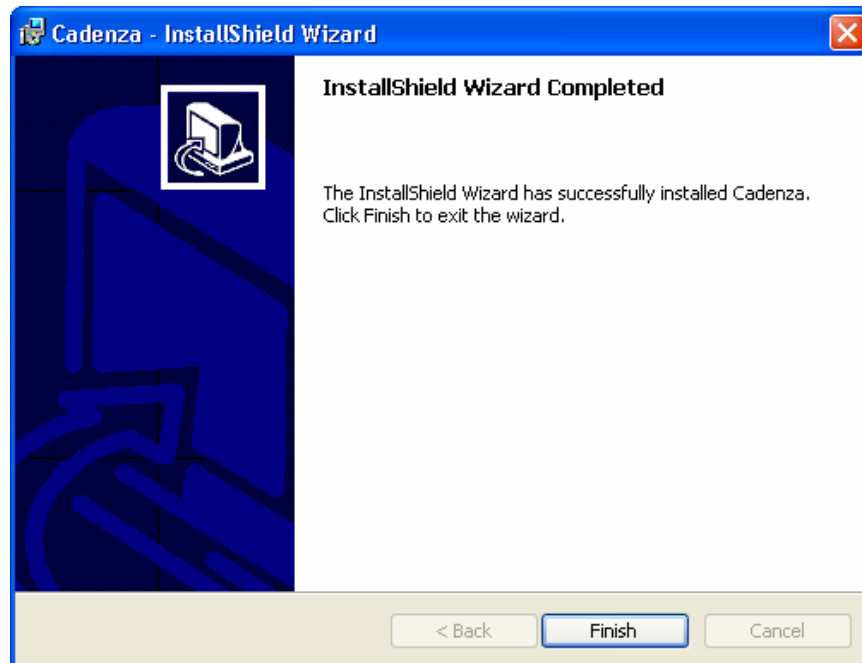
Finally, you enter the password associated with your Lotus Notes user id.



Upon verification of your password, the following screens will appear.



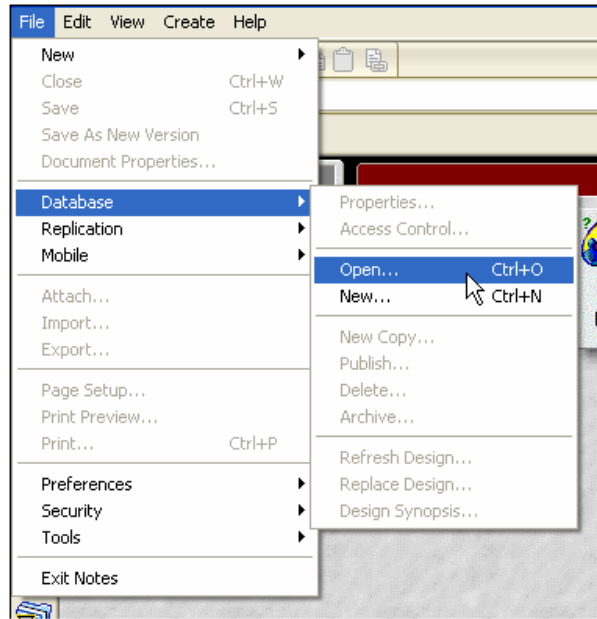
The configuration completed successfully.



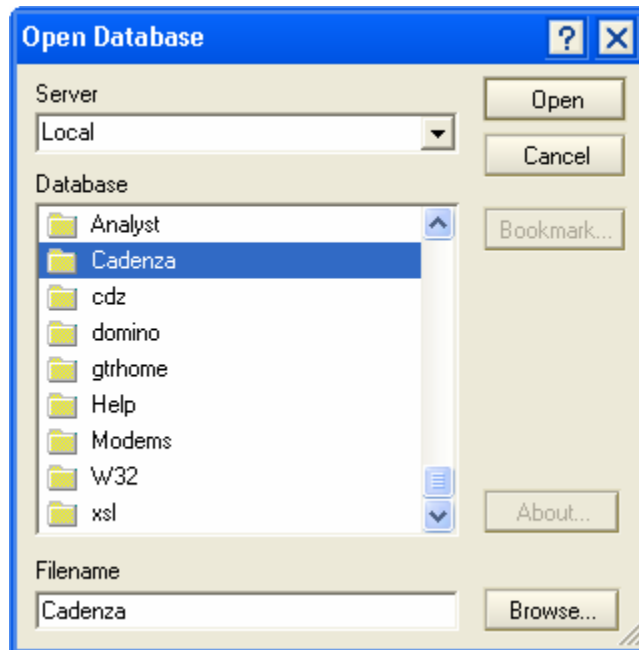
Finish the installation process.

### Mobile Revalyst Configuration Database (Desktop)

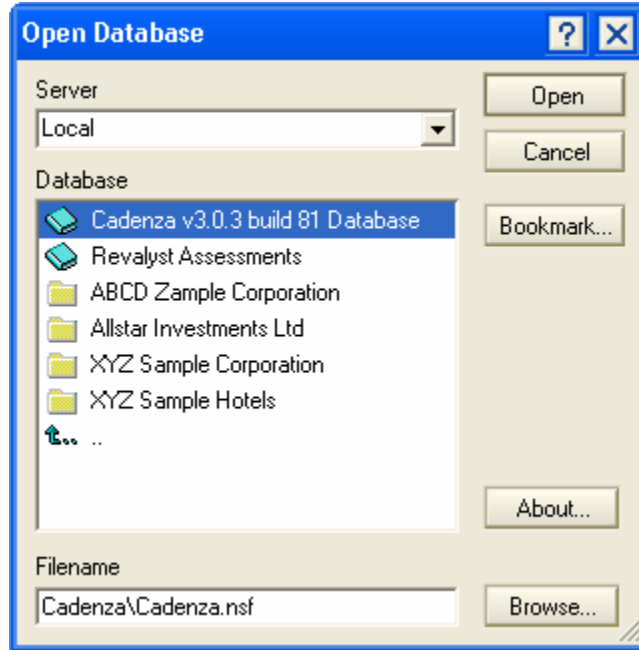
You should not have to make any change to the Lotus Notes database that contains the information required to make the replication process successful. To access the configuration database, use “File/Database/Open” from the Lotus Notes main menu.



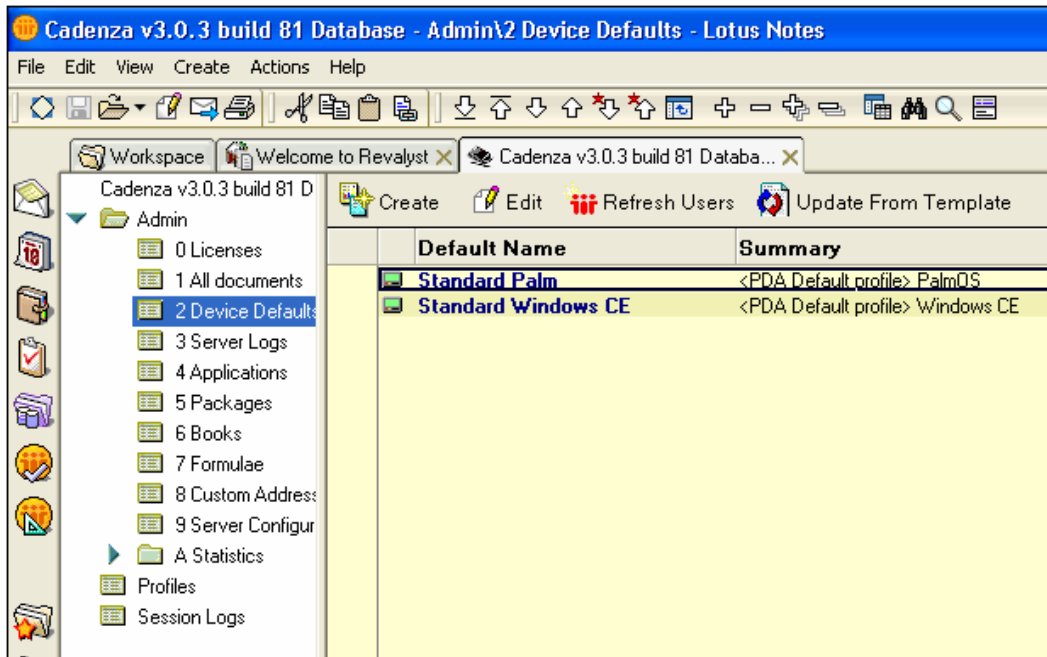
The configuration file is located in the “Drive letter/Lotus Notes Installation Directory/Data/Cadenza” directory.



The database title should be similar to the one shown below. Click Open.



You will notice two entries in the “2 Device Defaults” view.



Both entries are set to active.

Select (edit) the mobile device that you will NOT be using and set “Active” to No. Save and Close the document. Open the document that reflects the type of mobile device you will be using and set “Active” to Yes.

▼ **PDA information**



**Name:** Standard Palm  
**Active:**  No  Yes  
**PDA Type:** PalmOS

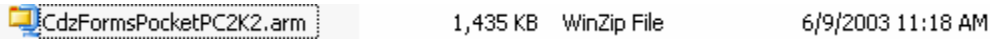
By default, all the services, except “Form Loading” are set to ON. Unless you are already using “mNotes” from “Commontime”, which provides replication between your desktop Notes and your mobile device, leave these items checked on. Otherwise, turn all services off, except for “Form Loading”.

**Services:**  Mail  Calendar  Form Loading  
 Names  Book Library

Save and Close the document.

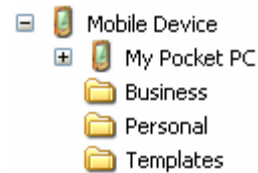
## Mobile Device – Revalyst Software Requirements

Software must be installed on your mobile device, so that Mobile Revalyst will run. The software being installed is dependent on the type of mobile device. The filename shown below should be installed on a Pocket PC.

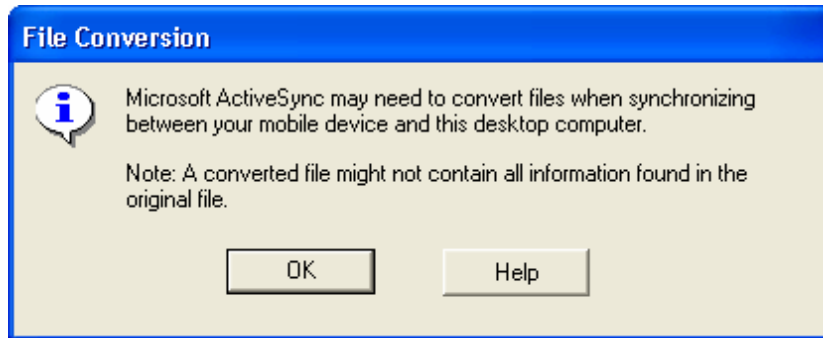


The appropriate software can be purchased from Future Path Development Group.

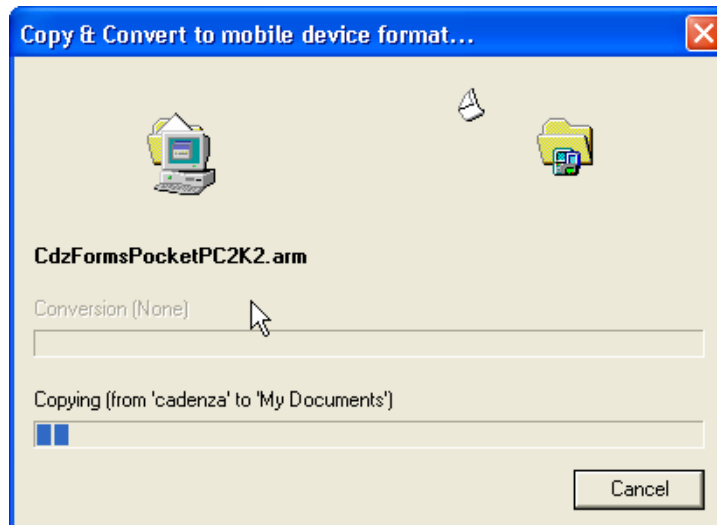
Using explorer on your computer, locate your mobile device. If properly connected, you will see some standard directories.



Copy the software supplied from Future Path, from your computer to the root of your mobile device. The following message will appear. Press OK.



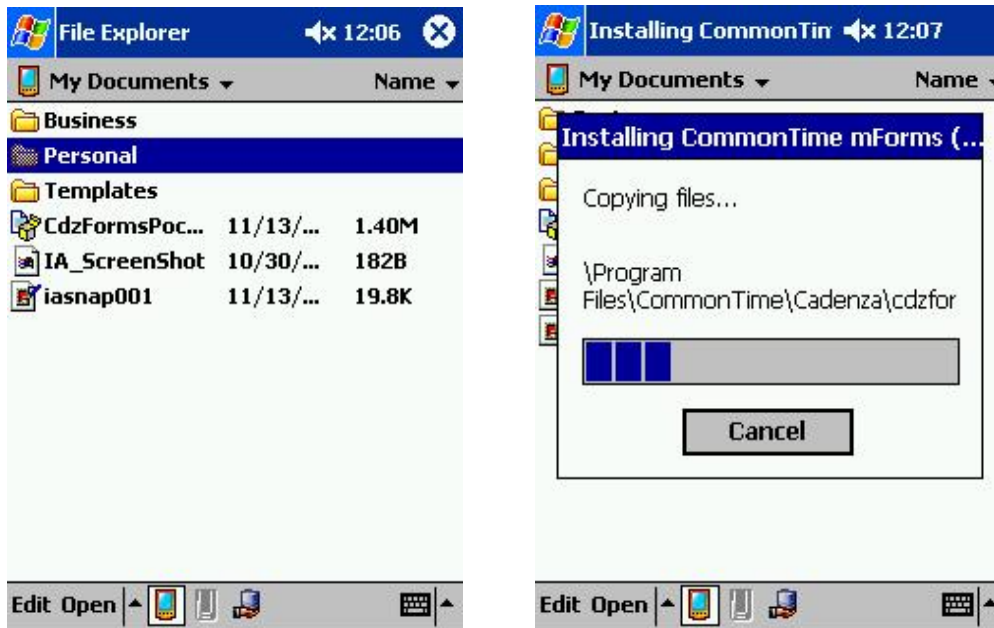
The file is converted for use on a mobile device.



Refresh the directory on your mobile device and you should see the copied file (.arm extension in this case).

Name	Size	Type
My Pocket PC		System Folder
Business		File Folder
Personal		File Folder
Templates		File Folder
CdzFormsPocketPC2K2.arm	1.40MB	WinZip File
IA_ScreenShot.iaa	182 bytes	IAA File

Although you can see the copied file, it must be installed from the mobile device. Using File Explorer on your mobile device, locate the copied file. Launch the application by double-clicking your mouse. A copying files message will appear, as shown below.



Your mobile device will now contain a directory called “mForms”. Now that you have all the required software installed, the next step will be to create an assessment. As soon as an assessment has been created, the assessment can be placed on your mobile device.

Please refer to the help document entitled “**Generating An Assessment**”.